



NCSI: NC STRAWBERRY INVESTIGATIONS

NC Strawberry Investigations Teaching Prints



Soil Preparation



Laying Plastic



Strawberry Transplants



Setting Out Plants



Young Plants



Frost Protection, Irrigation



Frost Protect. Row Covers



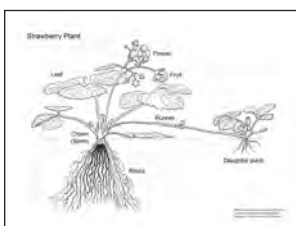
Flower with Bee



Flowers and Green Fruit



Ripe and Unripe Berries



Labeled Drawing



FULL SET (11 images)

Teaching Prints are part of the NC Strawberry Investigations curriculum, which includes K-5 lesson plans and additional resources. The lessons can be accessed for free online, after a simple registration process. For more information and a link to the registration page, visit www.ncstrawberry.com/docs/NCSI-Introduction.htm.

Teaching Prints are 18 x 24 inches and are printed on heavy, coated cardstock. The set includes ten full-color images of strawberry production and a black-and-white drawing of a strawberry plant, labeled with the parts of the plant. A short text for each photo is included, which can be pasted to the back of the photo as a script (or you may choose to write your own wording). The prints can be laminated or mounted for greater durability. You may request the full set or partial sets of specific images. *The NCSI project is supported in part by the North Carolina Department of Agriculture and Consumer Services Specialty Crop Block Grant Program.*

Cost: For educators working in school and organizational/institutional settings, NC strawberry growers and any NC Strawberry Association members: A \$10-\$20 donation is requested to help cover printing and mailing costs so these can continue to be offered when grant funds run out. Partial sets, suggested \$3.00 per print.

For all others, including home-schoolers: \$25/set, includes U.S. shipping. Partial sets: \$5.00/print, minimum order \$10.00.)

To Order: Please indicate which prints you want (or the full set), by checking under the images to left.

Name _____

Farm/School/Agency _____

Mailing Address _____

City _____ State _____ Zip _____

Phone _____

E-mail _____

NC Strawberry Association member? Yes No

Payment or Donation to support printing/ mailing: \$ _____

Payment by Check (made out to NCSA) Credit card (MC, Visa, Disc)

Card number _____

Exp. Date _____

Name on card _____

Send orders to:

NCSA, 197 Spring Creek Rd, Plattsboro, NC 27312

or fax to 866-511-6660.

Questions 919-542-4037 or ncstrawberry@gmail.com